

SocietyPeptide.com LLC

Peptide Society

Identity: [www.sociypeptide.com](http://www.sociypeptide.com)

Received Date: 03/31/2026

Analysis Conducted: 04/05/2026

Searchable via: [horizonanalytical.com](http://horizonanalytical.com)

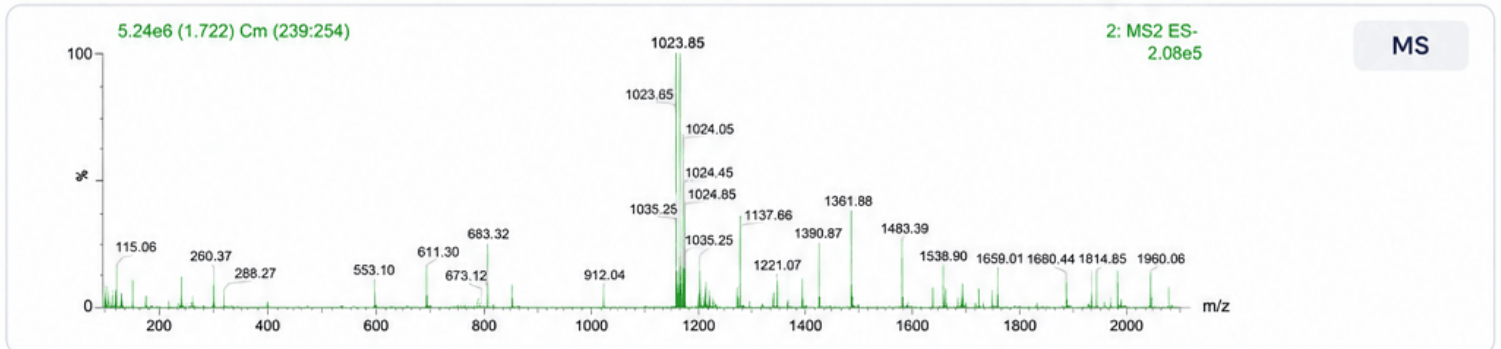
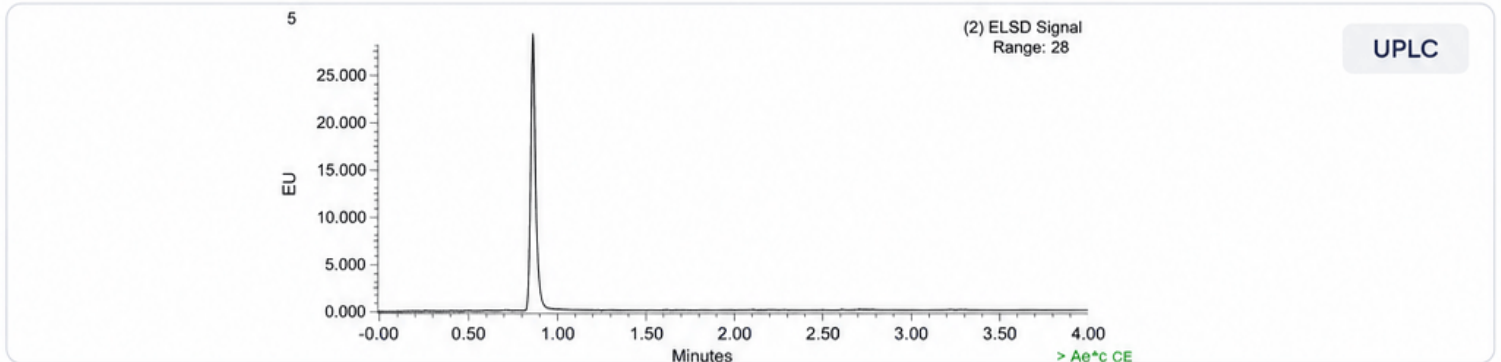
|             |                          |
|-------------|--------------------------|
| Compound:   | PT-141                   |
| Lot:        | PS-6170177               |
| Appearance: | White Lyophilized Powder |

|             |   |
|-------------|---|
| CAS:        | 189691-06-3   |
| Formula:    | C <sub>50</sub> H <sub>68</sub> N <sub>14</sub> O <sub>10</sub> |
| Mol Weight: | ~1025.2 g/mol   |

Pubchem CID: 9941379

Qualitative and Quantitative chemical analysis by Ultra High Performance Liquid Chromatography with Mass Spectrometry (UPLC/MS)

|                | Specification | Result | Scan to Validate:  |
|----------------|---------------|--------|--|
| Compound Test: | PT-141        | PT-141 |  |
| Quantity:      | 10mg          | 9.85mg |  |
| Purity:        | >98%          | 99.35% |  |



**Aleksey Yevtodiynko PhD**  
Research and Formulation Chemist



This purity analysis was conducted using UPLC/MS under standard laboratory conditions, following validated analytical protocols to ensure accurate and reliable results. This analysis is intended for informational and research applications.